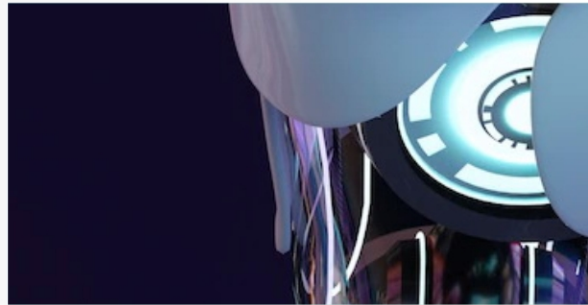
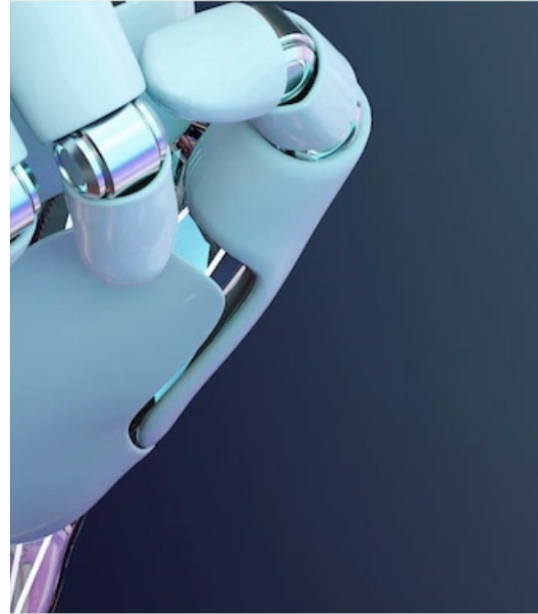
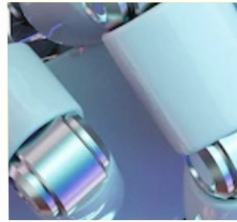
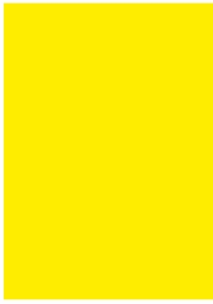
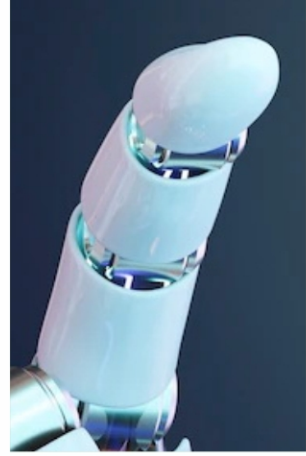




Composites Tomorrow

Subscribe to Next Generation Innovations





Composites Tomorrow (CT) is focused on providing niche area solutions in advanced composites. Our customers love us for being an Engineer to order (ETO) company. At CT we have expertise in various processes like Resin Infusion, Prepreg Moulding, Hand Lay-Up, Compression Moulding, and others. We also have experience working with an immense variety of materials like Carbon, Para Aramids, Basalt, Quartz, S Glass, Jute, and similar other types of reinforcements. The matrix system includes saturated thermosetting resins that can perform from room temperature to 400°C, with multiple functional groups and high chemical stability. So far, we have contributed to a multitude of industry segments including Drones, Underwater Vehicles, Robots, Medical Equipment, Orthotics, Prosthetics, Renewables, Space Applications, Armors, and others. CT is also associated with a lot of academic research.



Drones / Robots / Underwater Vehicles / AGV

Composites Tomorrow (CT) has proven competencies in structural parts manufacturing like Wings, Rudders, Fuselage, Equipment Bay, Landing Gear, Battery Frames, and others. The ultra light weight parts, engineered for extreme performance, can be made. The company offers a complete product package from composites manufacturing, to intricate and accurate machining, to precision and interchangeable assembly.



Body And Vehicle Armor

Composites Tomorrow (CT) has developed soft and hard armors for a few customers, with both Para Aaramid and UHMWPE. The products have been qualified as per NIJ standards. CT also has developed composites to metal, and composites to ceramic bonded structures for armor projects.



Kevlar Skinning



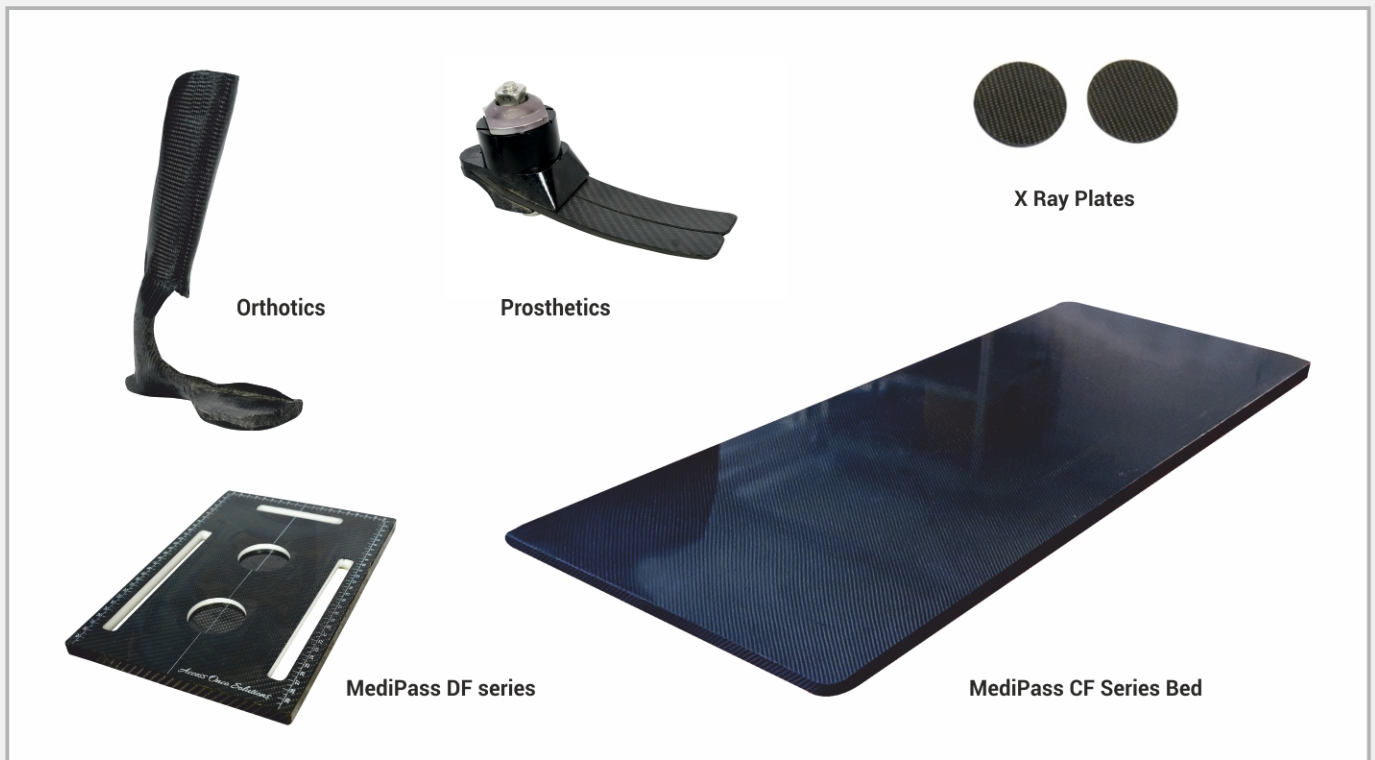
Vehicle Armour With Precision Fitment Location



Bulletproof Jacket (Level 3 Certified)

Medical Equipment, Prosthetics And Orthotics

The flagship product of CT – **MediPass**, is used in plethora of medical equipment for radiotherapy and dosage, across the country. It has CT values from +250 to -910 HU. We have also been associated with institutes. We have developed highly personalized Ankle foot orthoses for an institute. CT also has developed products in prosthetics.



Renewables, Railways And Space Applications

CT has developed several sandwich panels, for different industry segment. Our "**Collaps-O-Core**" are known to collapse at a prescribed loading. "**Stiff Plus**" are specialized panels with high bending stiffness. CT also offers lightweight sandwich panels, with strict flammability and smoke development standards. CT is known for its carbon phenolic parts, in flame retardant product family.



Stiff Plus



Collaps-O-Core



Flame Retardant Sandwich Panels



*Composites
Tomorrow*

Subscribe to Next Generation Innovations

Address: 37, Haribhakti Estate, Dabhoi Road, Somasundarapalya, Vadodara - 390004, Gujarat, India. **Phone:** +91 99989 59449

E-mail: archal.shah@compositestomorrow.com

Web: compositestomorrow.com

Our Other Business Units **CT Retail & CT Connect**